

TOSHIBA

e-STUDIO3508LP

e-STUDIO4508LP

Product brochure

- > The world's first multifunction systems with erasable print function.
- > Toshiba's unique hybrid printing technology allows users to print in either traditional black or erasable blue toner.
- > Equipped with state-of-the-art features for modern document workflows.
- > Designed for businesses which want to combine ecology, economy and efficiency.



TOGETHER
INFORMATION

CONNECT, INTEGRATE, SIMPLIFY AND REUSE

Toshiba's hybrid technology combines conventional printing with erasable printing which allows you to reuse paper over and over again. One single device easily connects, integrates, and simplifies your workflows — and also helps to save valuable resources.

At Toshiba, we are dedicated to serving our customers and committed to the future of our planet on our promise of Together Information.

Black and White printing has never been this green.

The world's first Black and White MFP with erasable print function.



EVERYTHING YOU NEED IN ONE SYSTEM

Ecology

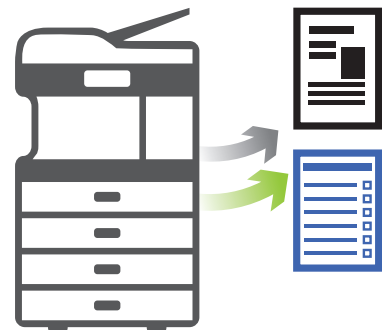
The idea of a paperless office has been around for more than 40 years, yet even modern business workflows still require printed documents. Toshiba offers companies a practical approach to saving paper without impacting on proven print workflows. Our unique hybrid printing technology offers everything you would expect from a state-of-the-art multifunction printer (MFP) and more: You can now even reuse the paper.

Economy

One single system can print in regular black as well as in erasable blue. For you this means you can use the Hybrid MFP just like any other monochrome device to print in black and can choose from a variety of finishing options to ensure you have a system which covers all your needs. Our erasable blue toner allows you to reuse the paper you have printed on, so that you can use less paper, without having to print less. Reducing paper usage will save natural resources, reducing your company's footprint and also help you save money.

Efficiency

Driven by Toshiba's e-BRIDGE Next controller the system will boost your productivity. It provides ease-of-use and ensures that the device is capable of adapting to your document workflows. Whether you need to connect to 3rd party solutions or simply want to optimise your internal processes, the Toshiba Hybrid MFP is there to help you enhance your overall efficiency.



KEY FEATURES

- > A unique monochrome system with a speed of up to 45 pages per minute (ppm) and up to 35 ppm in erasable blue ensures the Hybrid MFP can handle even large jobs effortlessly.
- > A customisable, tablet-like user interface, gives easy access to the print, scan, copy, fax and erase functions.
- > Outstanding image quality you can rely on. No matter whether you use black or erasable blue toner, the result will always be the same: impeccable documents.
- > The optional Dual Scan Document Feeder can hold up to 300 sheets while processing documents at an amazing speed of up to 240 images per minute.
- > Utmost data security thanks to features such as the self-encrypting Toshiba Secure HDD and further optional security functions for IEEE2600.2 compliance.

OUR BEST TECHNOLOGY TO ENHANCE YOUR BUSINESS

Optimising workflows to get the most out of available resources has become essential for businesses which want to be successful. We have designed our Hybrid MFP to offer you all features you need to be productive and efficient. But there's more: we have added a unique erasable print function, which can be selected in the printer driver just like any other setting.

Connect

Having access to your documents when you need them is becoming more and more important. We have made sure you get what you want, whenever and wherever you want it.

- > **Multi Station Print** allows you to send print jobs from your computer and retrieve them at any convenient MFP by authenticating at that device, e.g. by swiping your badge.
- > **Cloud printing** ensures you have access to your documents no matter where you are. Our embedded apps let you send your documents directly to or print them from Microsoft OneDrive, Google Drive and Dropbox.
- > **Mobile printing** gives you the flexibility to print directly from your mobile device via AirPrint, Google Cloud Print, Mopria Print Service or our Toshiba e-BRIDGE Print & Capture app. With an optional module which activates the WiFi as well as the "Bluetooth" feature, you can easily connect mobile devices directly with the MFP.

Integrate

The Hybrid MFP incorporates our latest e-BRIDGE technology. This makes it easy to integrate the system into your existing IT infrastructure and helps the administrators to work more efficiently. The open platform architecture also enables the creation of customised workflows, that simplify complex scanning, archiving or other document management tasks.

Simplify

We strongly believe that good technology must be easy to use and that's how we designed the Hybrid MFP. The large tablet-like screen with an embedded web browser is easy to use and customisable to meet your needs. It gives direct access to all functions of the MFP and increases the efficiency of the users.



Toshiba's Hybrid MFP - all features you need in one unique system.

Reuse

Toshiba's Hybrid MFP comes with a unique feature: paper can be reused thanks to the erasable blue toner, which has a positive impact on the environment. The erasing can be done either via the Hybrid MFP or the optional paper reusing device, the e-STUDIO RD301.



PRINTING HAS NEVER BEEN THIS GREEN

How does it work?

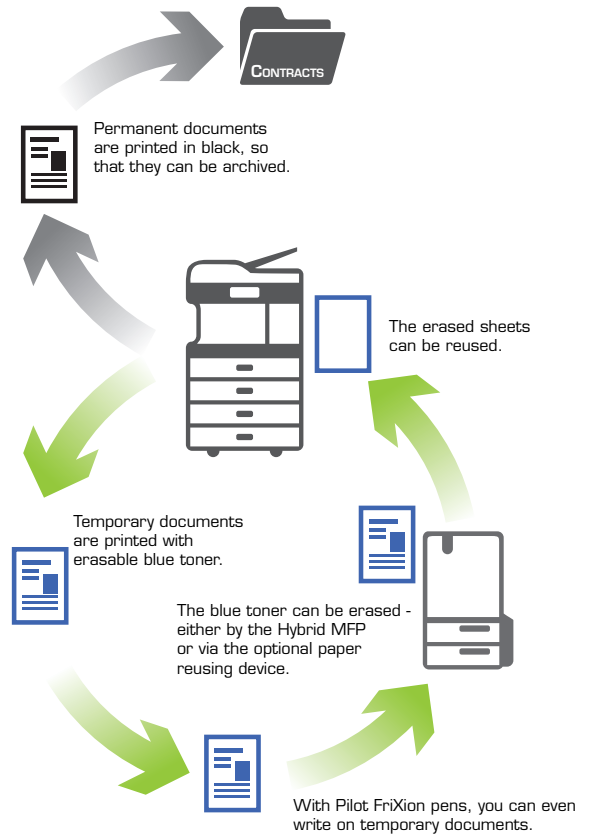
Often documents are only temporary, e.g. proofs or as a reminder to do something. For these cases Toshiba's hybrid system gives you the possibility to select the erasable blue toner, so that when you don't need your document anymore, you don't have to throw the paper away, but can delete whatever was printed on it and reuse the sheet. To make it easier rule-based printing can be activated in the printer driver. This allows you to define multiple rules for the printer driver to then automatically select the blue toner e.g. for all e-mails and faxes as these type of documents usually tend to be used only temporarily.

To easily track how much you have already saved, the e-BRIDGE Paper Reuse Report calculates paper reduction and average paper usage to show your environmental contribution at a glance.

How can the toner be erased?

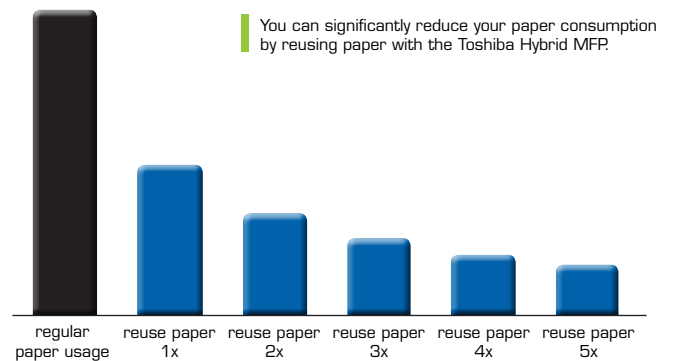
The Hybrid MFP has a built-in erasing function. Simply place the used paper into the designated cassette and start the process. The blue toner will be erased making the sheets ready to be re-used for printing.

Alternatively, you can use the optional e-STUDIO RD301 — an erasing unit with advanced features. Not only does it erase at a speed of up to 30 ppm, it also sorts the paper into reusable and non-reusable paper. Additionally, it can also digitise the documents for electronic archiving before erasing the toner.



What is the benefit?

Assuming that you use a sheet of paper five times (i.e. reuse it four times) and you print 4,000 erasable pages per month, you can save 80% paper. This means that after five years you will have saved almost 200,000 sheets of paper. In other words: The same amount of paper which you would usually use in one year, will now last five years.



Besides saving costs for paper (purchasing, storage and disposal) there is also a significant environmental benefit as you automatically reduce the carbon emission and water consumption, which is generated during the paper production.



SPECIFICATIONS

General

Print & Copy Speed	Black: 35/45 ppm (A4) 18/22 ppm (A3) Erasable Blue: 35/35 ppm (A4) 18/18 ppm (A3)
Erase Speed	Drawers: 17.5 ppm (A4) 8.5 ppm (A3) Bypass: 14.5 ppm (A4) 7.5 ppm (A3)
Warm-up Time	Approx. 22/26 seconds from low power mode
Paper Size & Weight¹⁾	Drawers: A5R-A3, 60-256 g/m ² Bypass: 100 x 148 mm-A3 mm, 60-256 g/m ²
Paper Capacity	2x 550 sheets (Drawers) ²⁾ , 1x 100 sheets (Bypass) ³⁾ Maximum 3,200 sheets
Inner Output Tray (virgin/reusable paper)	With Bridge Kit: 150/120 sheets Without Bridge Kit: 400/320 sheets
Automatic Duplex¹⁾	A5R-A3, 60-256 g/m ²
Controller Type	Toshiba e-BRIDGE Next
Control Panel	22.9 cm (9") Multi-Touch Colour Panel
Memory	Toshiba Secure HDD 320 GB ⁴⁾ , 4 GB RAM
Interface	10Base-T/100Base-TX/1000Base-T, High Speed USB 2.0, WLAN ⁵⁾ (IEEE802.11b/g/n), Bluetooth ⁵⁾ , Wi-Fi Direct ⁵⁾
Dimensions & Weight	585 x 640 x 787 mm (W x D x H), approx. 73 kg

Print

Resolution	600 x 600 dpi, 5 bit, 1,200 x 1,200 dpi, 2 bit (equiv. 3,600 x 1,200 dpi) with PostScript driver
Page Description Language	PCL5e, PCL5c, PCL6 (PCL XL), XPS and PostScript 3 compatible
Supported Systems	Windows 10/8.1/7/Server 2008 (32/64 bit), Windows Server 2016/Windows Server 2012 Windows Server 2012R2/Server 2008 R2 (64 bit), Mac OS X 10.6.8-10.12, Linux/Unix, Citrix, Novell SLES, SAP, AS/400
Network Protocols	TCP/IP (IPv4/IPv6), IPX/SPX, EtherTalk, NetBios over TCP/IP
Toner Modes	Erasable Blue, Black
Mobile Printing	e-BRIDGE Print & Capture, AirPrint, Mopria Print Service, Google Cloud Print
Print Functions	Universal Printer Driver, Driver Templates, Driver plug-ins ⁵⁾ , Print from USB, Hold print, Tandem printing

¹⁾ Paper weight for Erasable Blue mode: 64-80 g/m².

²⁾ If drawer is used for reusable paper, paper capacity of drawer is max. 400 sheets.

³⁾ If bypass is used for reusable paper, paper capacity of bypass is max. 30 sheets.

⁴⁾ 1 GB = 1 billion bytes; the actual formatted capacity is less. Available capacity will also be less if software applications are pre-installed.

⁵⁾ Optional

⁶⁾ Finishing functions are not available when printing in Erasable Blue. Paper capacity for reusable paper differs.

Scan

Resolution	Maximum 600 x 600 dpi
Scan Speed	Reversing Automatic Document Feeder ⁵⁾ : up to 73 ipm (300 dpi) in colour and monochrome
Scan Modes	Dual Scan Document Feeder ⁵⁾ : up to 240 ipm (300 dpi) in colour and monochrome
Scan Modes	Auto-Colour (ACS), Colour, Greyscale, Monochrome
File Formats	JPEG, Multi/Single Page TIFF/XPS/PDF, Secure PDF, Slim PDF, PDF/A, Searchable PDF ⁵⁾ (and other formats like DOCX, XLSX) ⁵⁾
Scan Functions	WS Scan, Scan to USB, Scan to E-Mail, Scan to File (SMB, FTP, FTPS, IPX/SPX, Local), Meta Scan ⁵⁾ , OCR scan ⁵⁾ , Scan to Box (e-Filing), WIA, TWAIN

Copy

Resolution	Scan: 600 x 600 dpi Print: 600 x 600 dpi, 2,400 (equiv.) x 600 dpi with smoothing
First Copy Output Time	Black: Approx. 5.9/4.4 seconds Erasable Blue: Approx. 7.8/7.8 seconds
Zoom	25-400% (Platen), 25-200% (RADF/DSDF) ⁵⁾
Original Modes	Text, Text/Photo, Photo, Blue Original
Copy Functions	Electronic Sort, Rotate Sort, ID Card Copy, Edge Erase, 2-in-1 / 4-in-1 mode

Fax⁵⁾

Communication	Super G3, G3 - (opt. 2 nd line), Internet Fax T.37
Transmission Speed	Approx. 3 seconds per page
Compression	JBIG, MMR, MR, MH
Fax Memory	1 GB Transmission/Reception
Network-Fax	Driver for Windows 10/8.1/7/Server 2008 (32/64 bit), Windows Server 2016/Windows Server 2012 Windows Server 2012R2/Server 2008 R2 (64 bit),
Incoming Fax Routing	To shared folders (SMB, FTP, IPX/SPX), E-Mail, e-Filing

System & Security

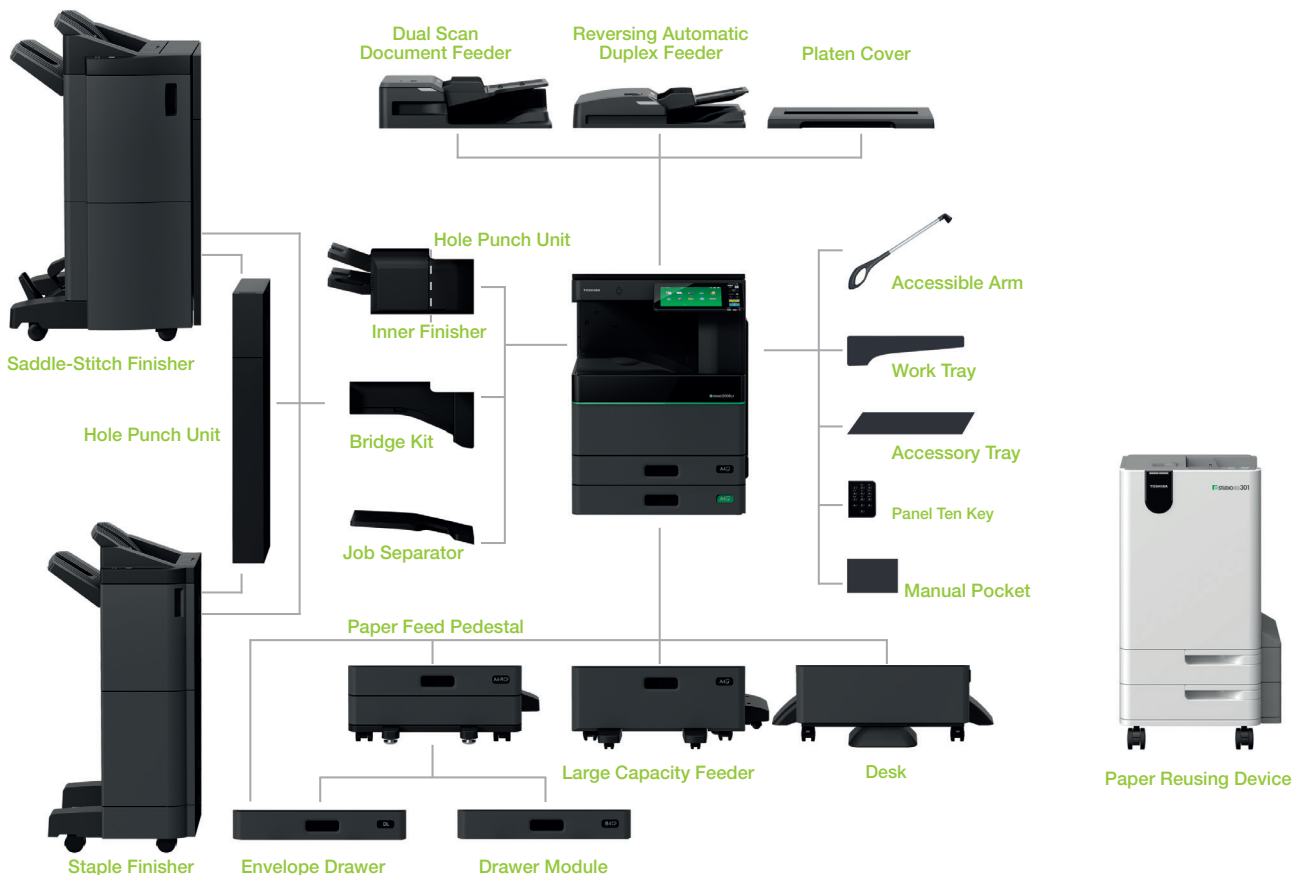
Device Management	e-BRIDGE Fleet Management System ⁵⁾ , TopAccess for remote administration and configuration
System Features	e-Filing document server for secure storage, Document distribution and Print-on-Demand (1 public box, 200 user boxes), 12,060 one-touch templates for storage of personalised settings or workflows, Scan/Fax Preview, Rip-while-Print, e-BRIDGE Open Platform ⁵⁾ , Embedded Web Browser, Job Skip, Erasing of Erasable Blue Toner
Accounting & Security	Role Based Access, LDAP support, 1,000 department & 10,000 user codes, Card Reader ⁵⁾ , Private print, Standard data encryption with Toshiba Secure HDD, Data Overwrite Enabler ⁵⁾ , IP and MAC address filter, Port filter, Support of SSL and IPsec ⁵⁾ protocols, IEEE802.1x support, IEEE2600.2 compliant ⁵⁾ , Scan to Secure PDF

OPTIONS

- e-STUDIO RD301** Paper Reusing Device to scan, erase and sort
100-sheet capacity (Document feeder)
400-sheet capacity (Re-usable paper drawer)
100-sheet capacity (Rejected paper drawer)
A5R-A4R, 64-80 g/m²
- REVERSING AUTOMATIC DOCUMENT FEEDER** 100-sheet capacity, A5R-A3, 35-157 g/m²
- DUAL SCAN DOCUMENT FEEDER** 300-sheet capacity, A5R-A3, 35-209 g/m²
- PAPER FEED PEDESTAL¹⁾²⁾** 550-sheet capacity (1 Drawer),
A5R-A3, 60-256 g/m²
- DRAWER MODULE¹⁾²⁾** For Paper Feed Pedestal
550-sheet capacity (1 Drawer)
A5R-A3, 60-256 g/m²
- LARGE CAPACITY FEEDER** 2,000-sheets capacity, A4, 64-105 g/m²
Not for reusable paper
- INNER FINISHER^{®)}** 2 trays, 600-sheet capacity
50-sheet multi-position stapling
B5-A3, 60-105 g/m² (stapling mode)
- MULTI STAPLE FINISHER^{®)}** 2 trays, 2,250-sheet capacity
50-sheet multi-position stapling
B5-A3, 60-105 g/m² (stapling mode)
- SADDLE-STITCH FINISHER^{®)}** 2 trays, 3,250-sheet capacity
50-sheet multi-position stapling
5-sheet center folding
Saddle-stitched booklets of up to 60 pages
B5-A3, 60-105 g/m² (stapling mode)
- HOLE PUNCH UNIT^{®)}** Available in 2 holes (E), 4 holes (F),
2 or 3 holes (N)

- PLATEN COVER**
- DESK**
- ENVELOPE DRAWER**
- JOB SEPARATOR**
- FAX BOARD**
- WIRELESS LAN / BLUETOOTH MODULE** (incl. Wi-Fi Direct)
- e-BRIDGE ID-GATE**
- CARD READER HOLDER**
- HARD DISK DRIVE 320 GB^{®)}** (FIPS 140-2 STANDARD)
- ACCESSORY TRAY**
- PANEL TEN-KEY OPTION**
- WORK TRAY**
- DATA OVERRWRITE ENABLER**
- IPsec ENABLER**
- EMBEDDED OCR ENABLER**
- MULTI STATION PRINT ENABLER**
- META SCAN ENABLER**
- UNICODE FONT ENABLER**
- ACCESSIBLE ARM**

e-STUDIO3508LP/4508LP



About Toshiba

Toshiba (Australia) Pty Limited is part of the globally operating Toshiba Tec Corporation, active in various high-tech industrial sectors.

Toshiba is a leading provider of information technology, operating across multiple industries - ranging from retail, education and business services to hospitality and manufacturing. With headquarters in Japan and over 80 subsidiaries worldwide, Toshiba Tec Corporation helps organisations transform the way they create, record, share, manage and display information.

For more information please contact us:

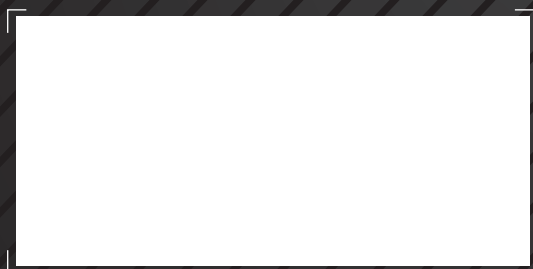
TOSHIBA (Australia) Pty Limited

Building C, 12-24 Talavera Road,
North Ryde, 2113. Australia
Tel: 1300 794 202

New Zealand

58 Lunn Avenue, Mt Wellington
Tel: 09 570 8530

www.toshiba-business.com.au
www.toshiba-business.co.nz



Together Information is Toshiba's vision for how people and organisations create, record, share, manage and display ideas and data.

It is based on our belief that the most successful organisations are those that communicate information in the most efficient way.

We make that possible through an integrated portfolio of industry-specific solutions, all of which reflect Toshiba's commitment to the future of the planet.